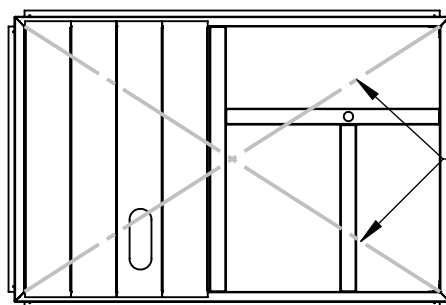


STEP 1: Ensure that the new or existing curb is level and square within $\pm 1/8"$.



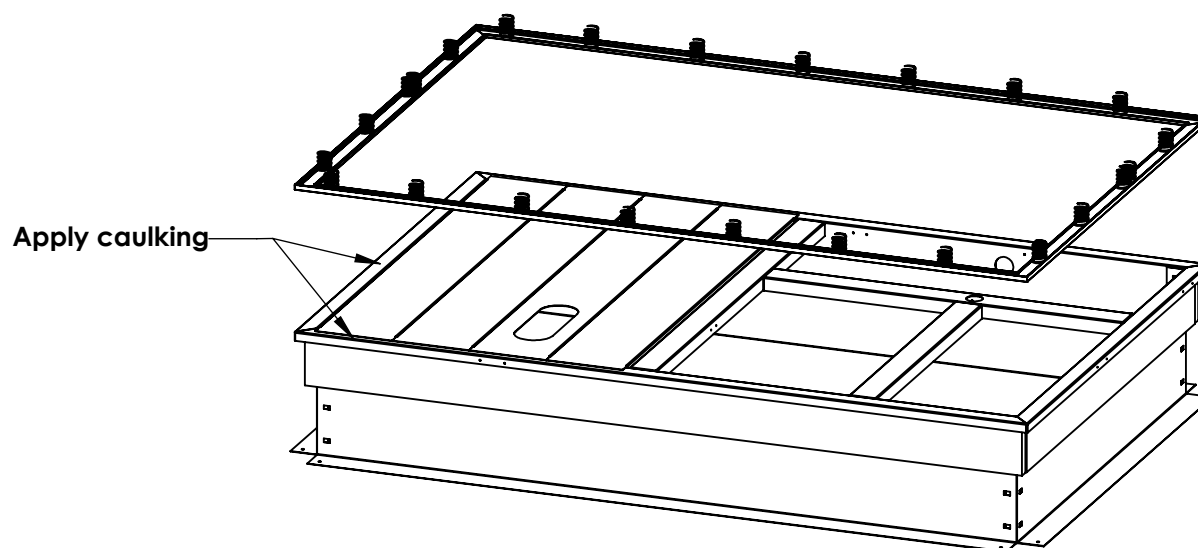
Verify:
Installed square $\pm 1/8"$

STEP 2: Locate the bottom rails with springs and restraints attached. They will be marked A, B, C, D. These will coincide with the labels on the submittal drawing.

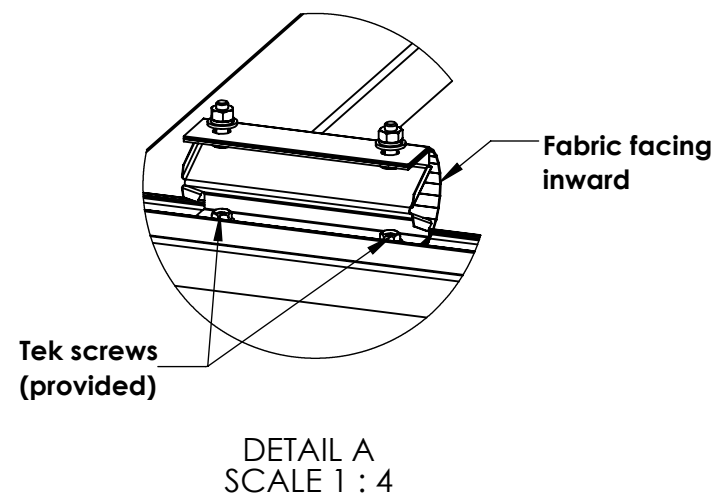
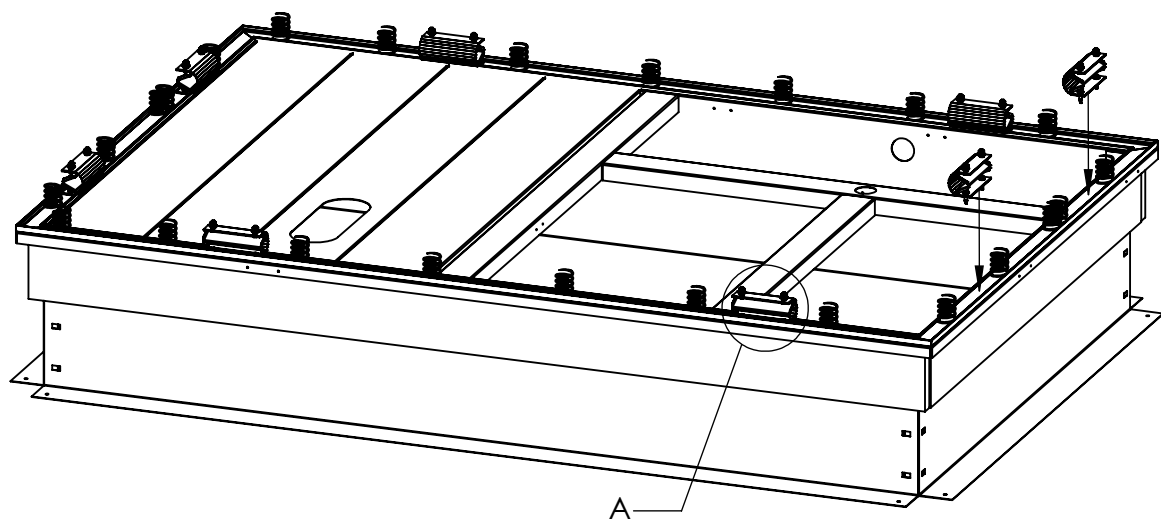
Remove the restraints from the rail and set aside, keeping the screws. discard wood block.

Lay the bottom rails onto the curb in the correct orientation. verify that all corners are tight and caulk all miters.

Screw the bottom rails to the roof curb using 14 x 1" Tek screws. Screw spacing should not exceed 12" center to center.

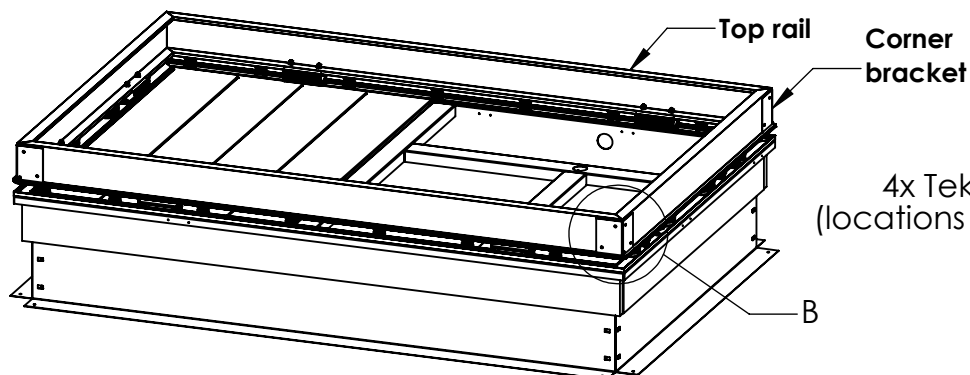


STEP 3: Install wind restraints in locations previously removed from the bottom rail. Use the (2) 1" long tek screws (provided) to attach restraint to curb through bottom rail and into top curb flange.

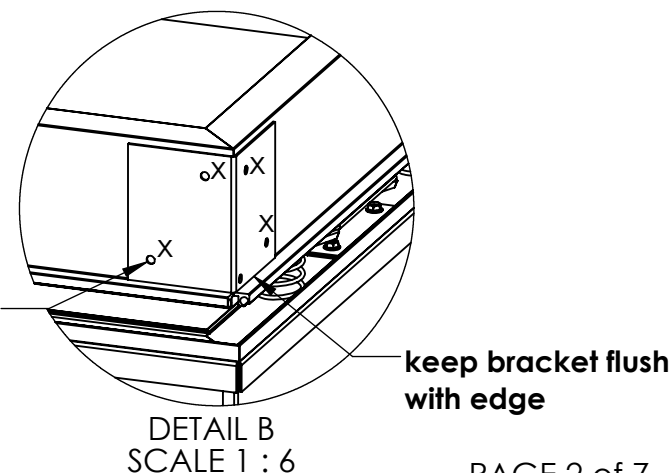


STEP 4: Set the top rails down onto the springs of each corresponding bottom rail. Inset the bolts up through the restraints and into the pre-drilled top rail. Secure with flat washer, lock washer and nut.

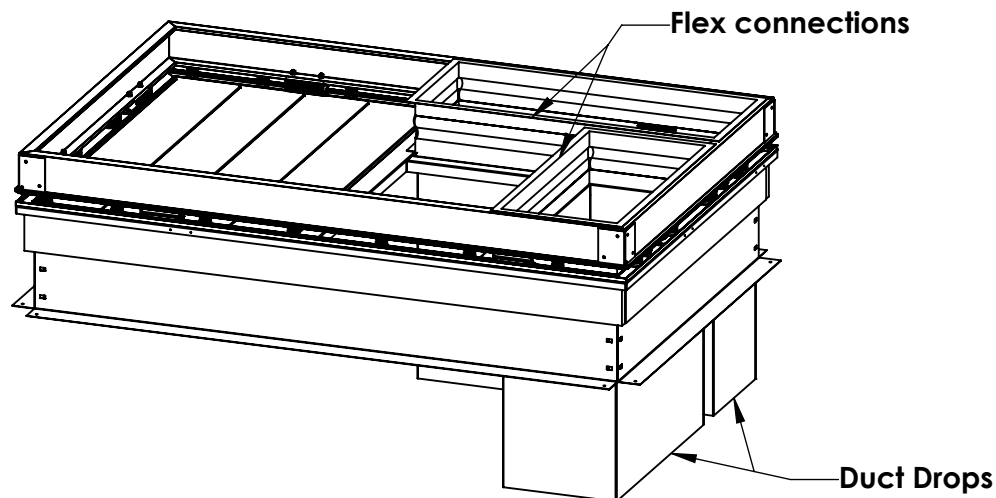
Attach corner brackets to the top rail at each corner using 1" long tek screws.



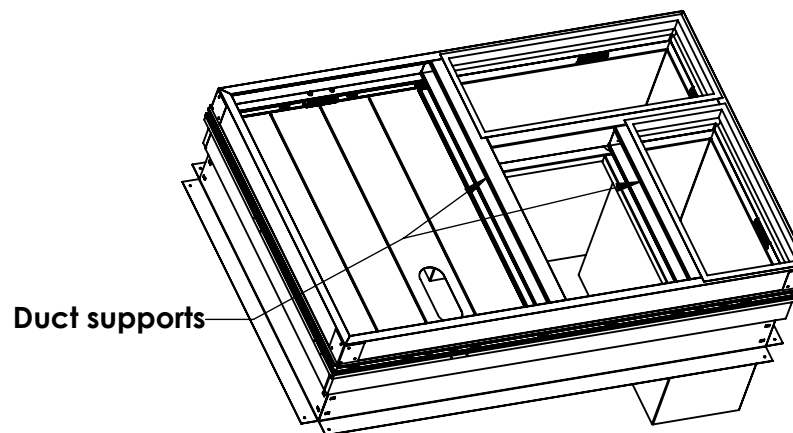
4x Tek screws
(locations marked "X")



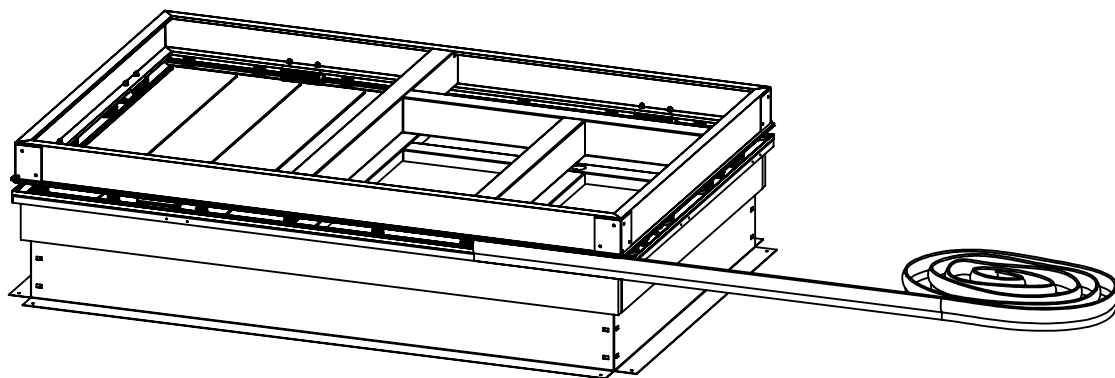
STEP 5: All Duct drops and flex connections (**Field Supplied**) should be installed onto the existing curb at this point for the supply and return air openings.



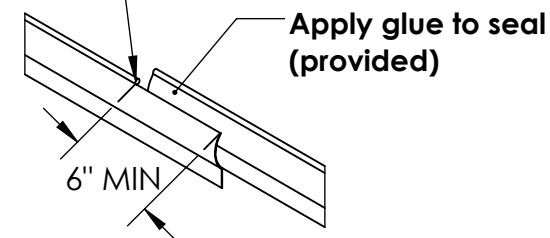
STEP 6: Install all duct supports provided with isolation rail using 14 x 1" Tek screws. locations and dimensions will be marked on submittal drawing.



STEP 7: Install perimeter weatherstripping. Start at one corner and slide the round edge into the bottom of the top iso rail. the groove can be lubricated with WD-40 or equivalent to help.



Trim round
as needed



Once the weatherseal is fully wrapped around the perimeter, overlap the cut end and use glue to seal. Additional trimming may be necessary for proper fitment.

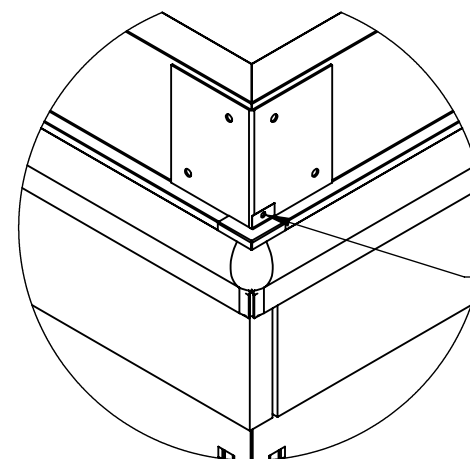
STEP 8: Install weatherstrip corner covers on each corner with a 5/16 x 3/4 Tek screw. apply caulking to seal any cracks.

If the isolation curb is wind rated and clips are not installed, please see instructions on page 6 before setting unit.

Apply provided gasketing to top rail and duct supports.
Install HVAC unit onto isolation rail carefully.

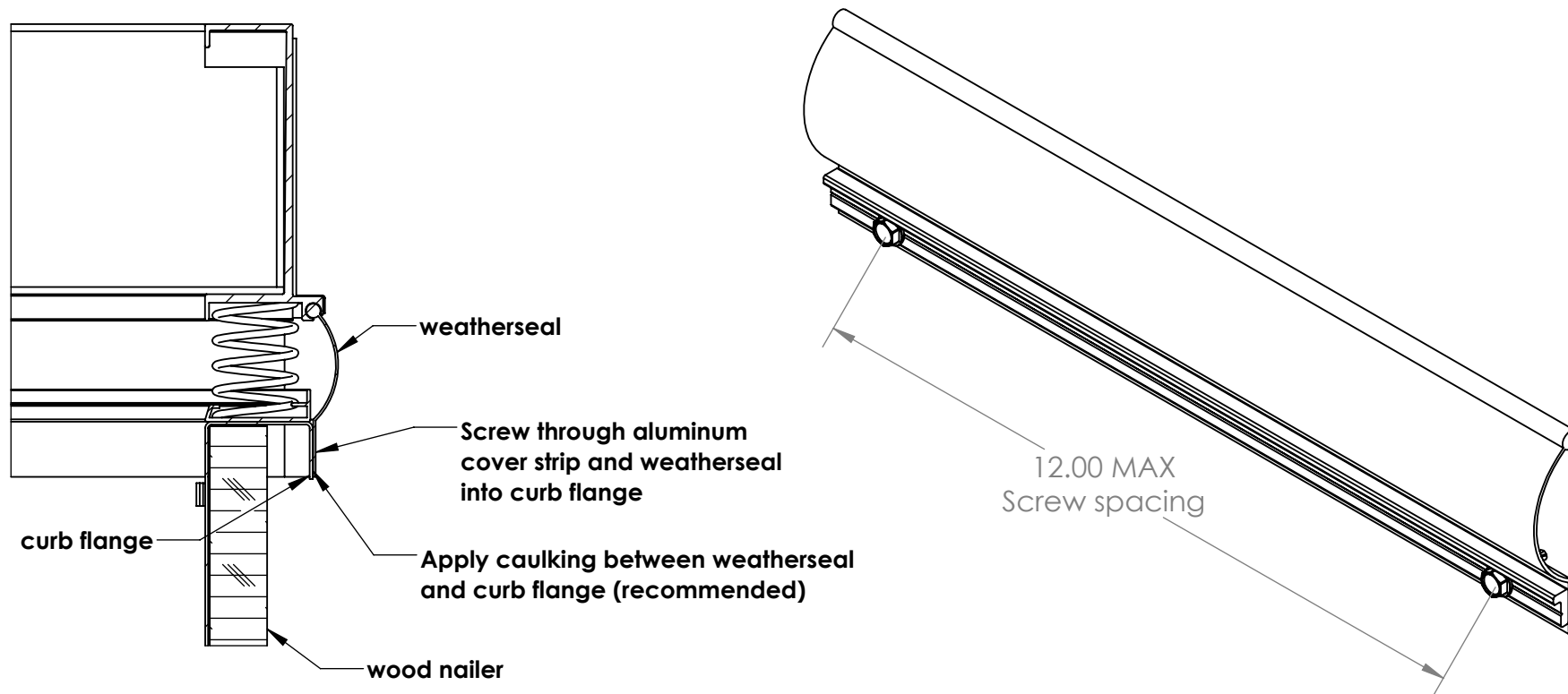
Verify the equipment is floating freely on all springs. if equipment is not floating, check to make sure there are no interferences between upper and lower rails.

If springs are over or under compressed, proceed to page 6 for unit leveling instructions.



Install Tek screw
with corner cover

STEP 9: Align the bottom of the weather seal with the bottom of the curb flange. Secure in place using the aluminum cover strip and provided 5/16 x 3/4 Tek screws. A bead of caulking is recommended between the weather seal and curb flange.

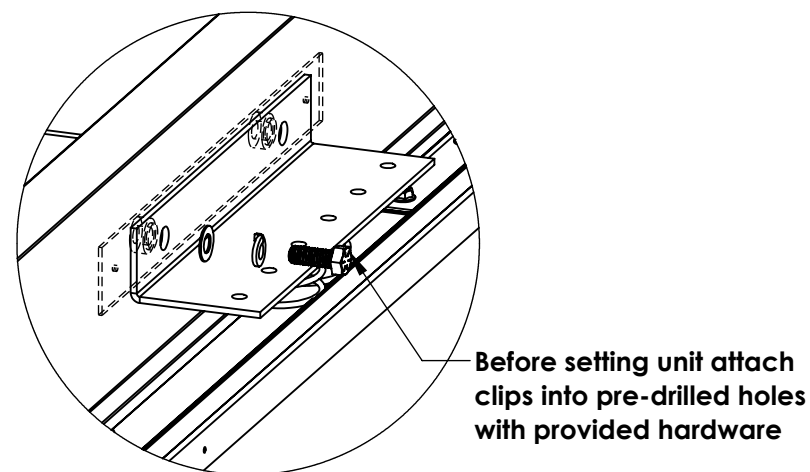
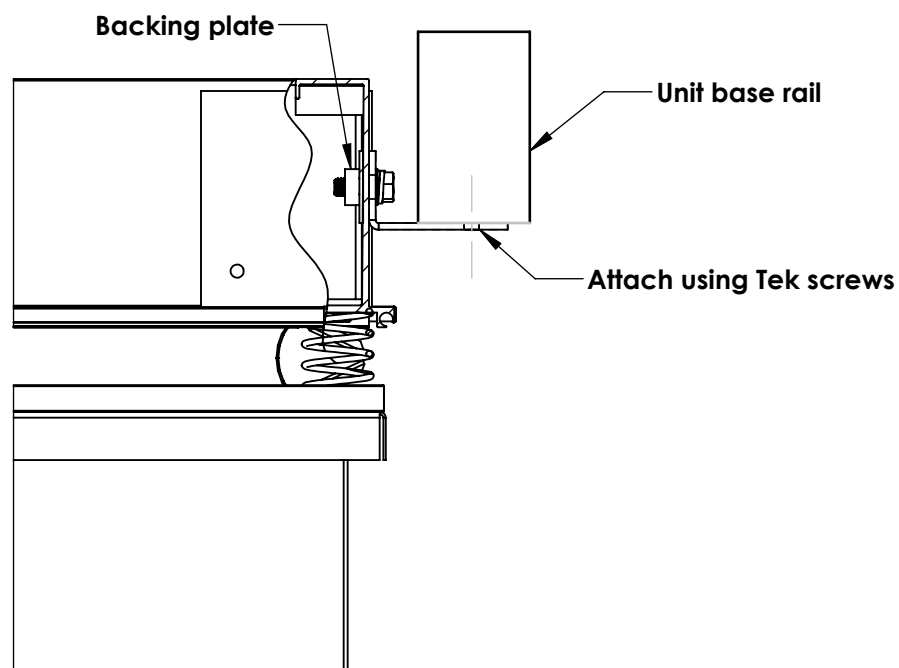


Wind clips will need to be attached to the isolation rail prior to lowering the unit. All clips and hardware will be provided with the curb.

Attach the clips to the iso rail using the 3/8-16 x 1" bolts with lock and flat washers. backing plate will go on the inside of the rail and include captive nuts.

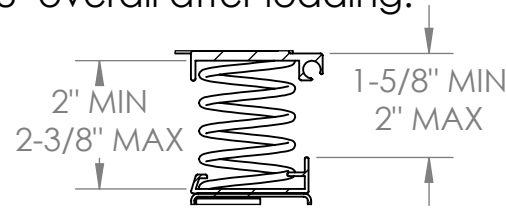
Note: Please refer to the clip orientation cross section paperwork provided with the curb. This is to ensure that the clip is installed correctly and in the right location.

lower unit onto the isolation rail and attach clips to the unit base rail using provided 1/4-14 Tek screws. **All holes in clip must be utilized to achieve required rating.**



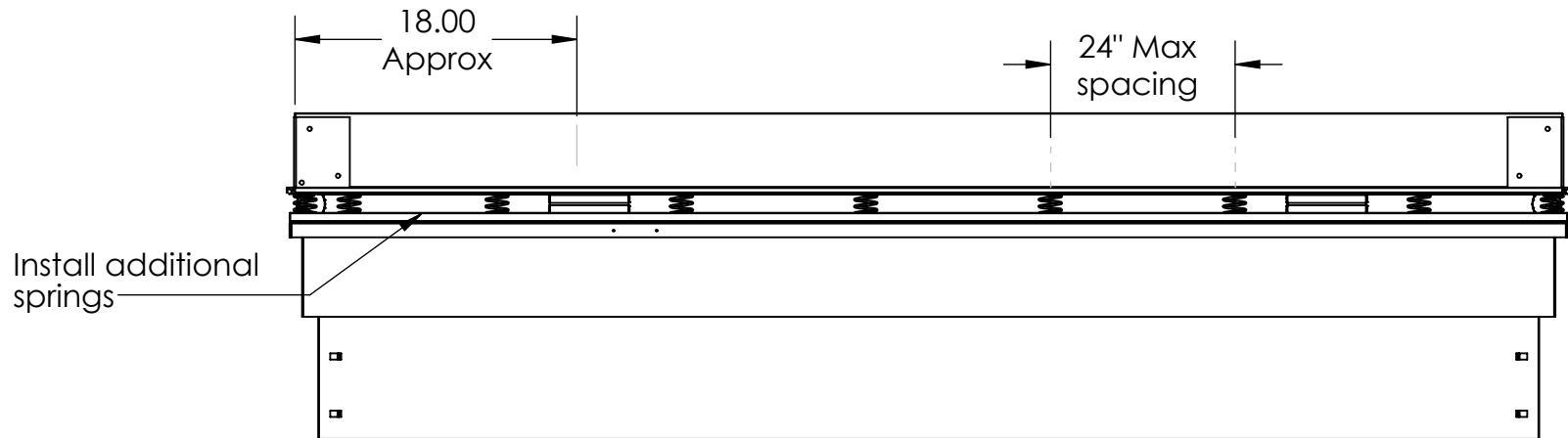
Note: Actual wind clip may look different due to variation in base rail

NOTE: Overloaded springs will measure less than a 2" gap and underloaded springs will measure more than 2-3/8" overall after loading.



BEFORE ATTEMPTING UNIT LEVELING, CHECK TO MAKE SURE THE TAG NUMBERS MATCH THE UNIT TAGS.

1. Identify low and high corners while the unit is fully resting on the rails.
2. Slightly lift the unit at the low corner and install additional springs (provided with curb). Springs should be installed within 18" of a corner.
3. If springs are being removed from a high corner, do not allow the gap to exceed 24" between springs.



4. If unit leveling is required after crane has left, a bottle jack may be used raise the corners of the unit to install/remove springs.